



.....
MARBLE ARCH HOUSE
.....

FLOOR PLANS



SCHEDULE OF AREAS

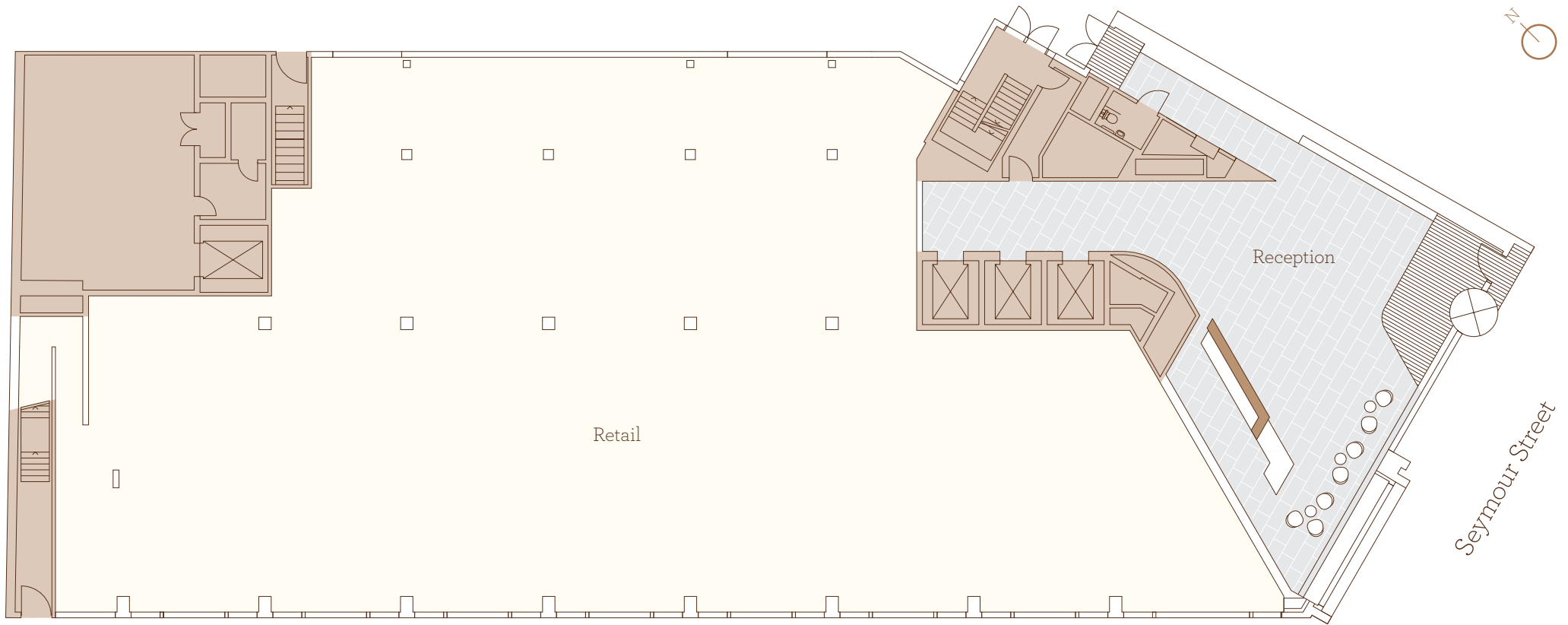
.....

FLOOR	SQ FT	SQ M
Seventh Floor	3,015	280
Sixth Floor	4,477	416
Fifth Floor	9,095	845
Fourth Floor	10,226	950
Third Floor	11,504	1,069
Second Floor	11,495	1,068
First Floor	11,424	1,061
OFFICE TOTAL	61,236	5,689
Ground Reception	2,250	209

All floor areas are net internal and subject to onsite verification



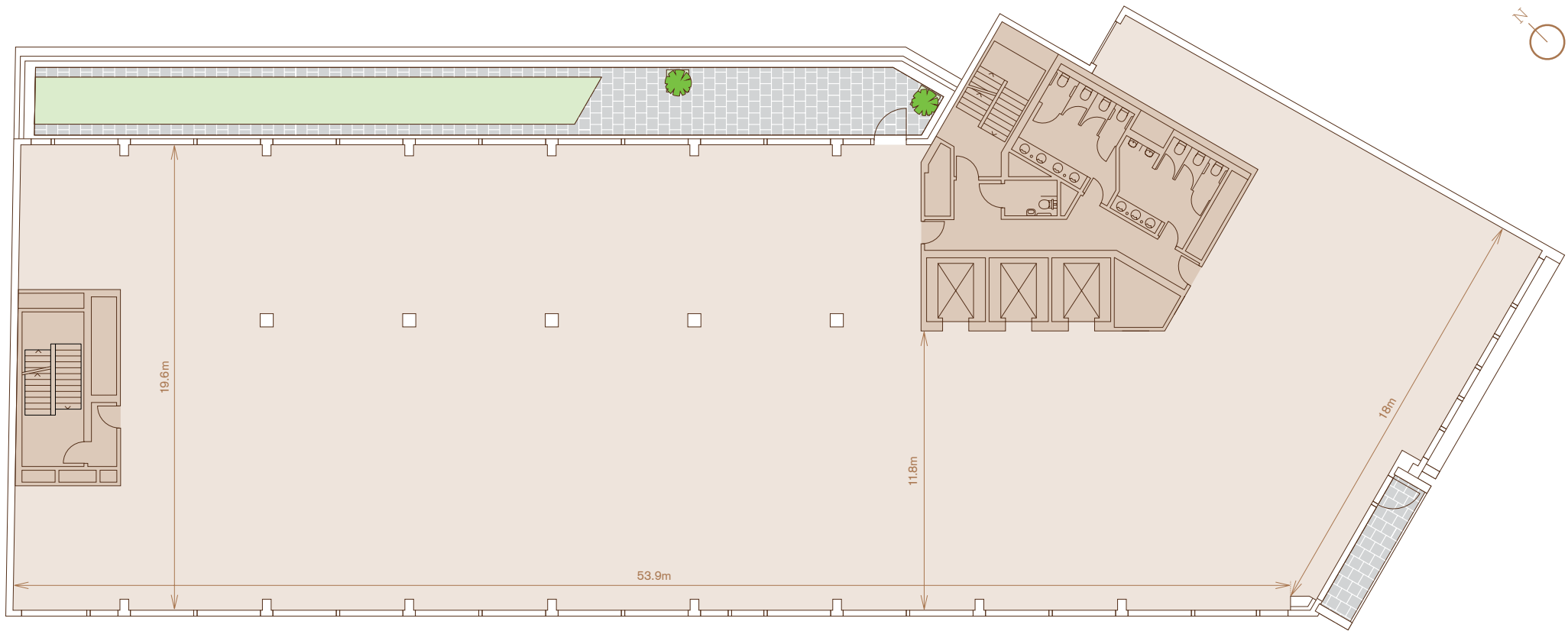
GROUND FLOOR



Not to scale

MARBLE
ARCH
HOUSE
W1

FIRST FLOOR



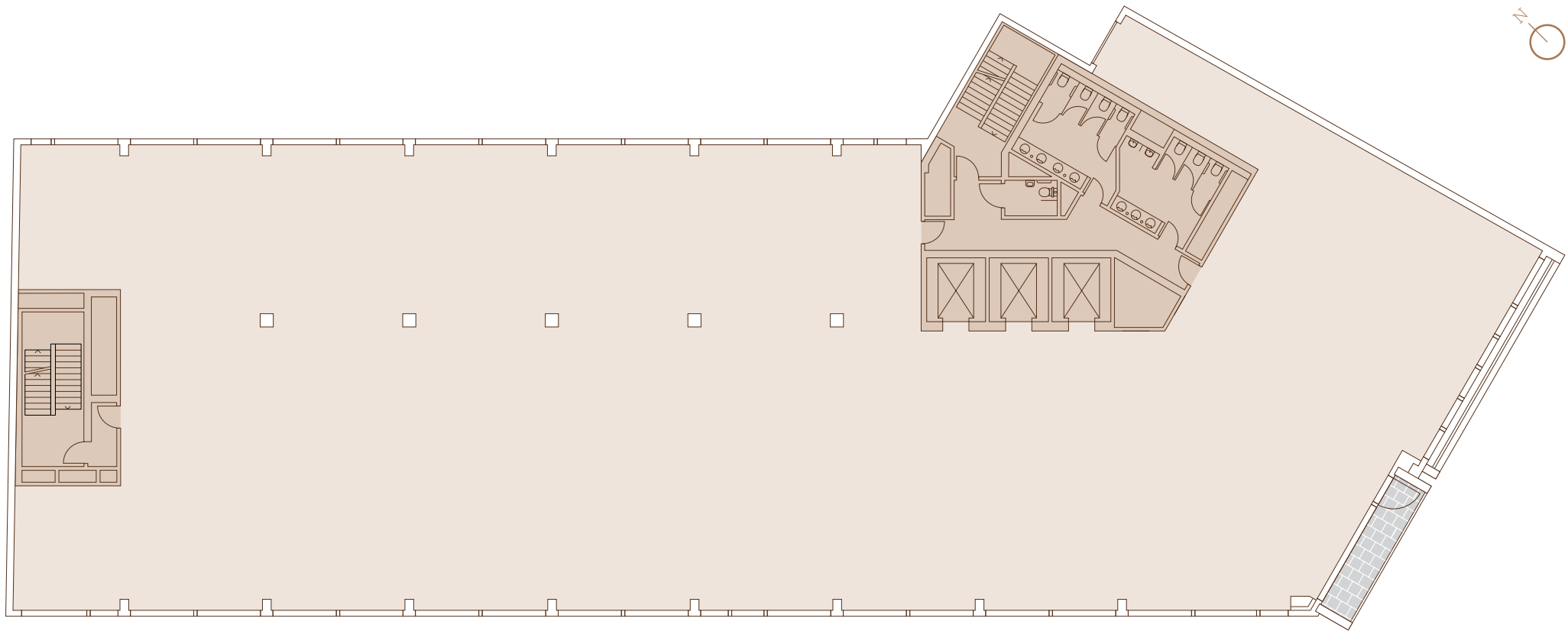
11,424 sq ft / 1,061 sq m

Not to scale



MARBLE
ARCH
HOUSE
W1

SECOND FLOOR

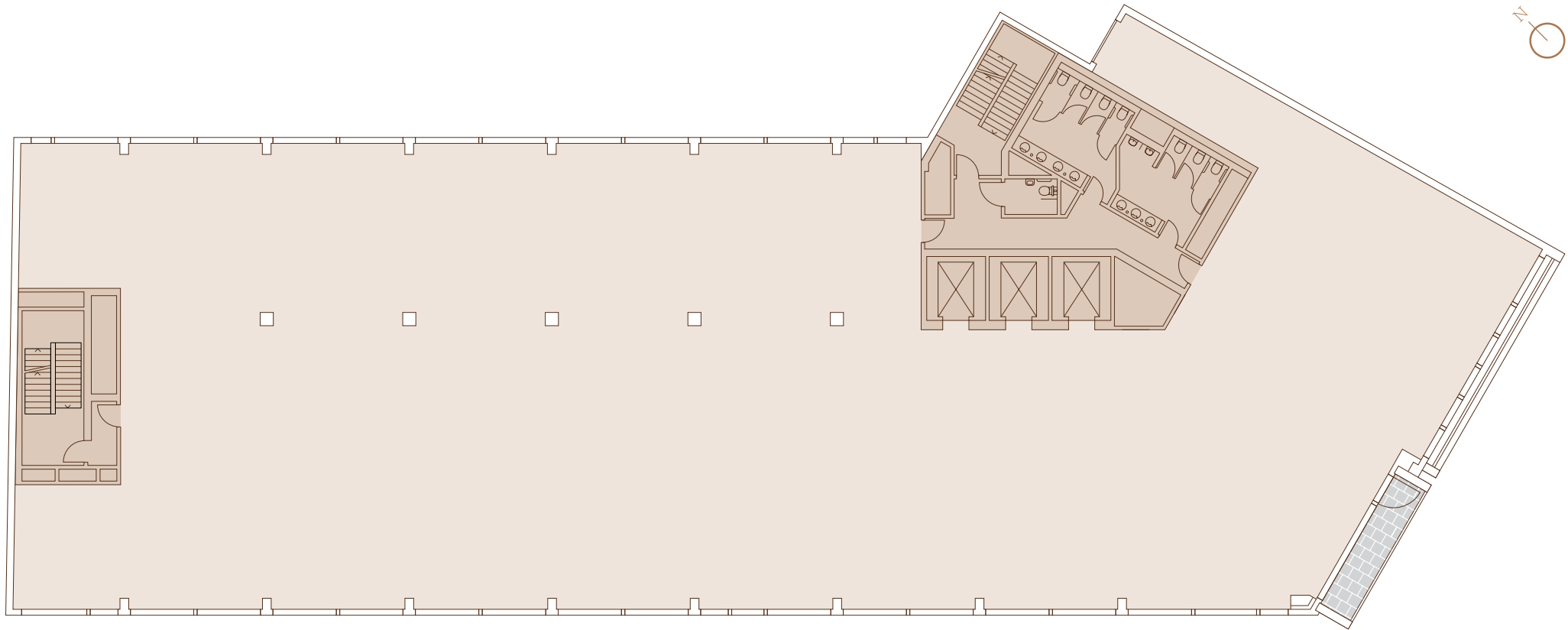


11,495 sq ft / 1,068 sq m

Not to scale



THIRD FLOOR

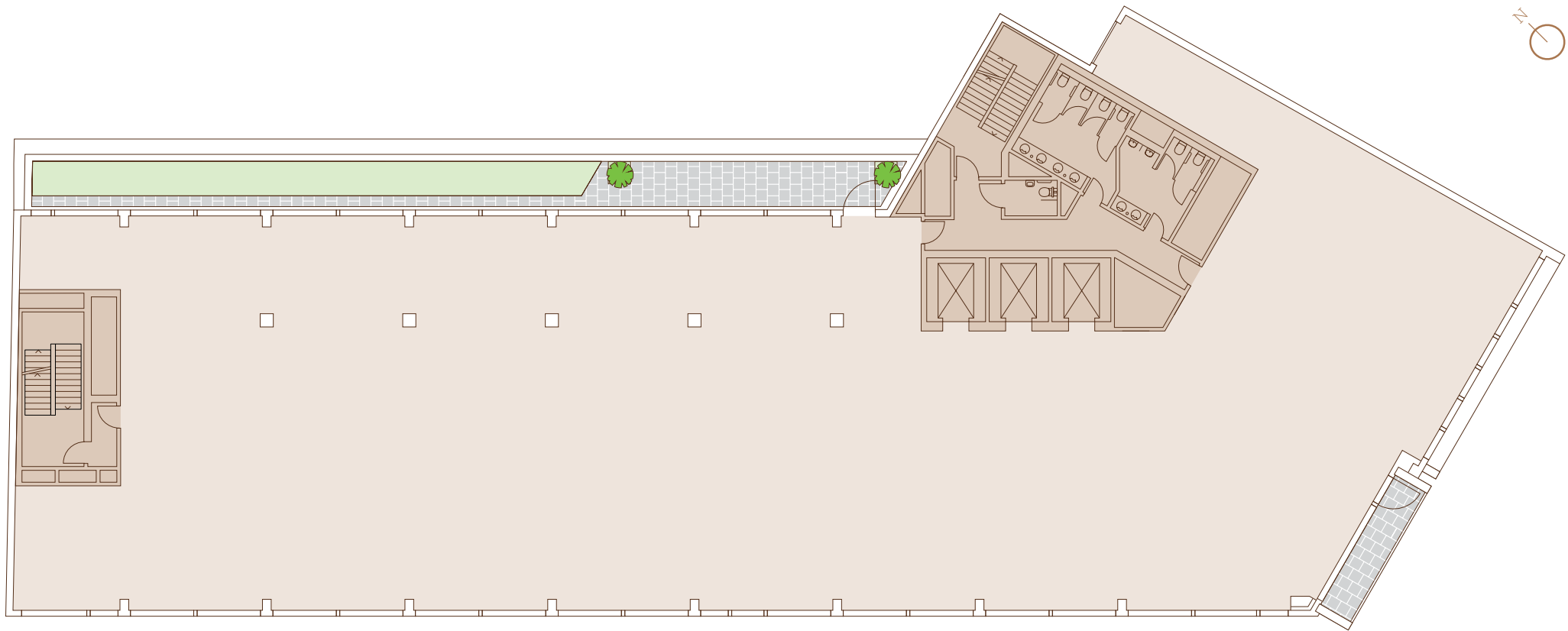


11,504 sq ft / 1,069 sq m

Not to scale



FOURTH FLOOR

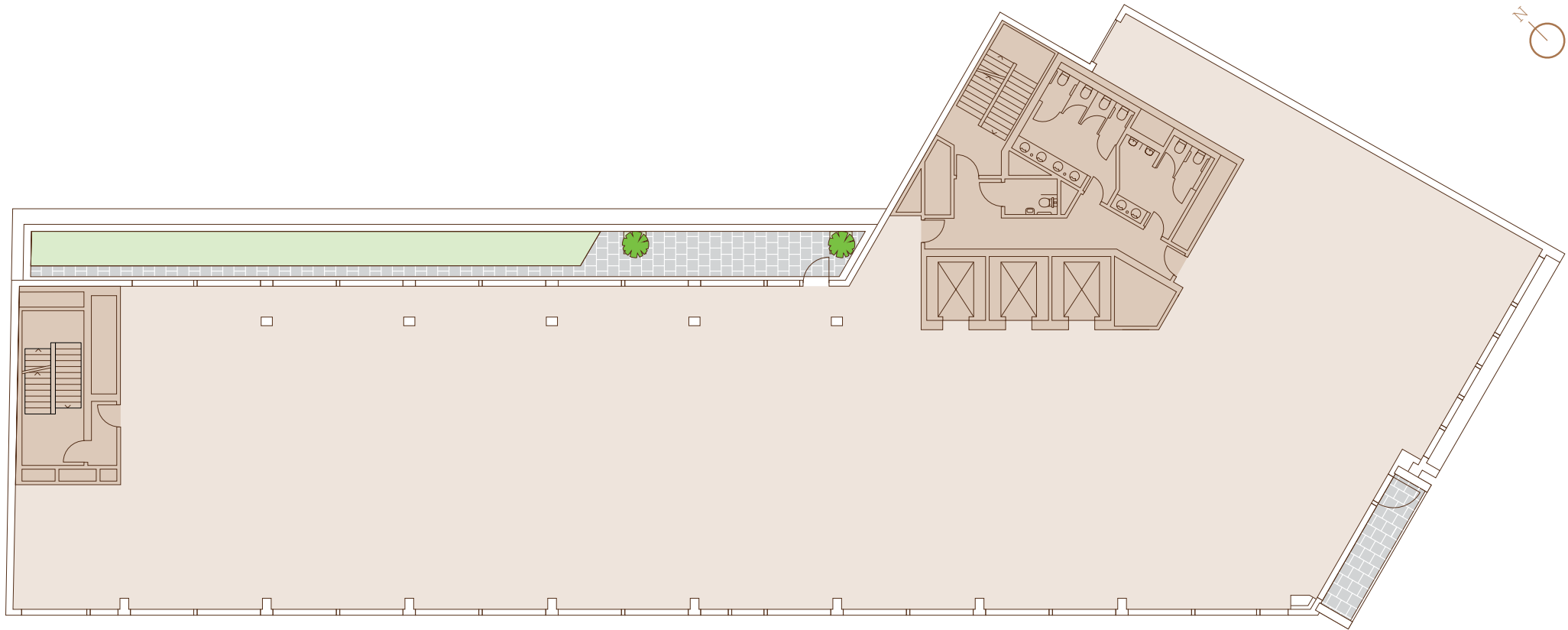


10,226 sq ft / 950 sq m

Not to scale



FIFTH FLOOR

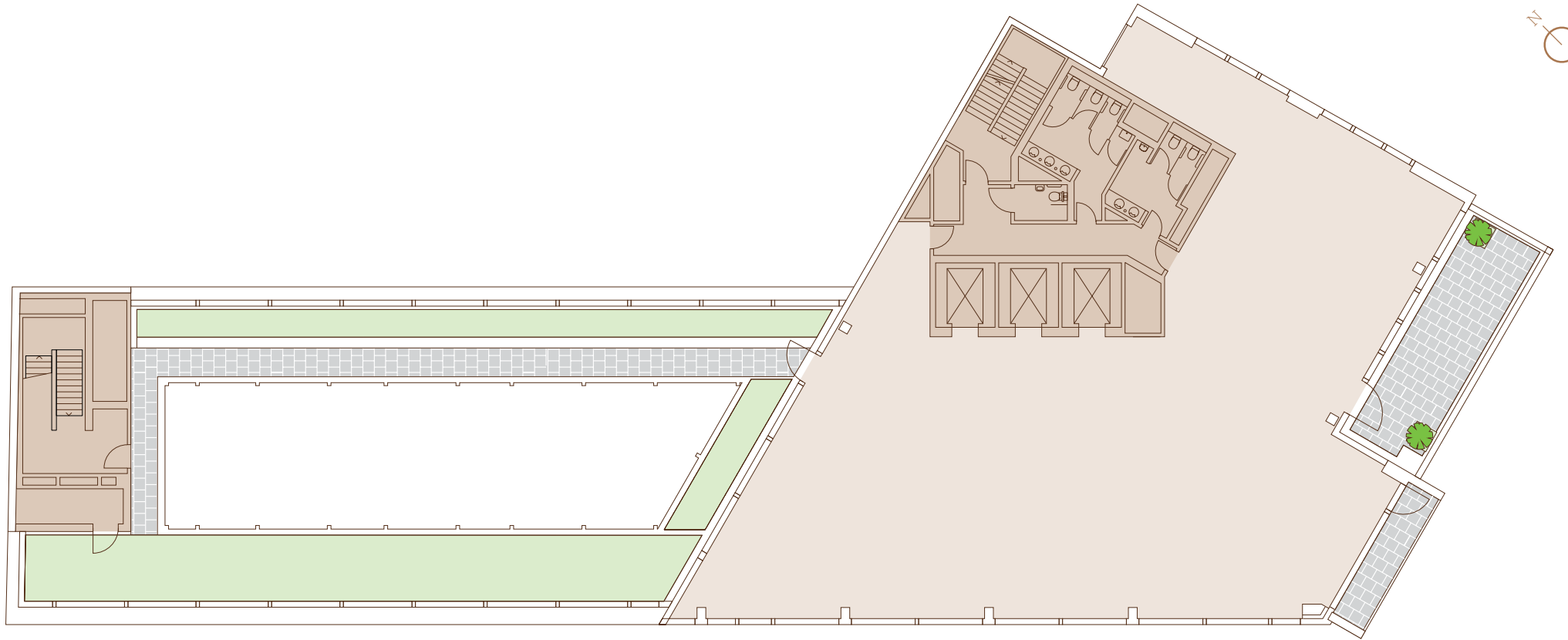


9,095 sq ft / 845 sq m

Not to scale



SIXTH FLOOR

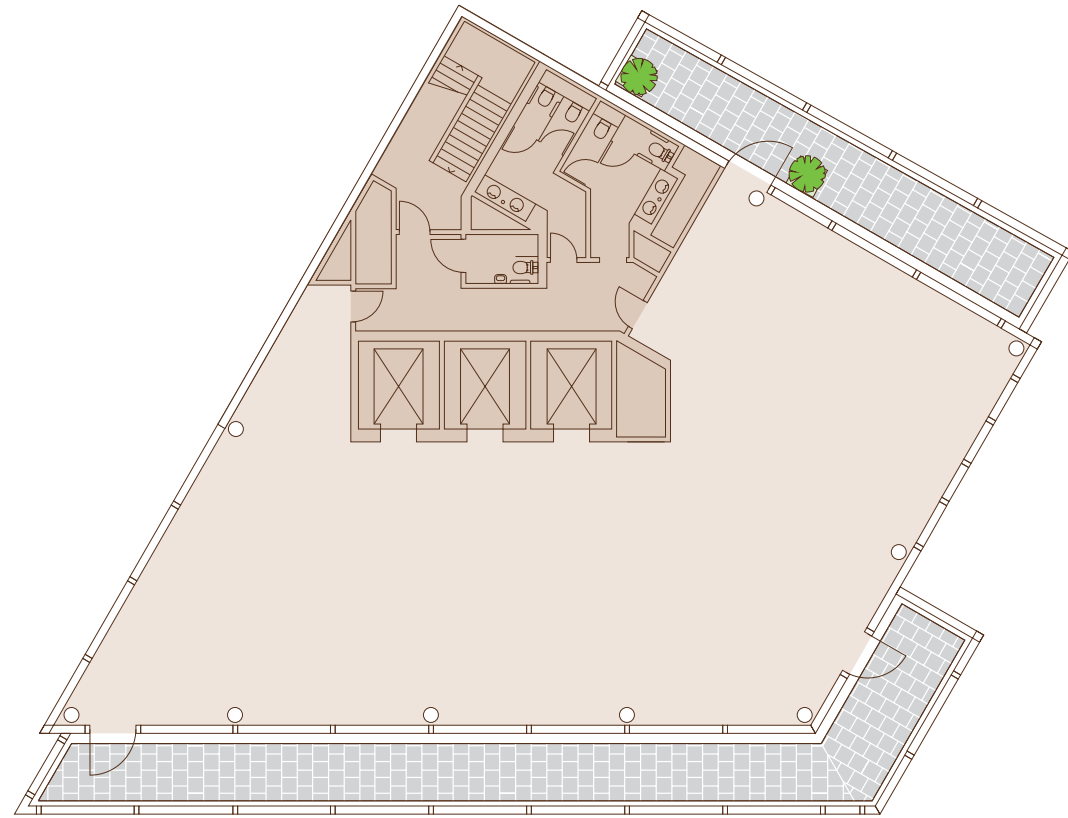


4,477 sq ft / 416 sq m

Not to scale



SEVENTH FLOOR



3,015 sq ft / 280 sq m

Not to scale



CONTACT

.....

For more information

British Land
James Danby
Director of London Leasing
020 7467 2818
james.danby@britishland.com

Cushman & Wakefield
020 7935 5000

CBRE
020 7182 2000

www.marblearchhouselondon.com



The British Land Company PLC and their agents give notice that: these particulars are set out as a general outline only, for the guidance of intending purchasers or lessees and do not constitute, nor constitute part of, an offer or contract; all descriptions, dimensions, references to condition and necessary permission for use in occupation and other details are given without responsibility, and any intending purchasers or tenants should not rely on them as statements or representations of fact, but must satisfy themselves by inspection or otherwise as to the correctness of each of them. All floor areas and measurements are approximate.

MARBLE
ARCH
HOUSE
W1