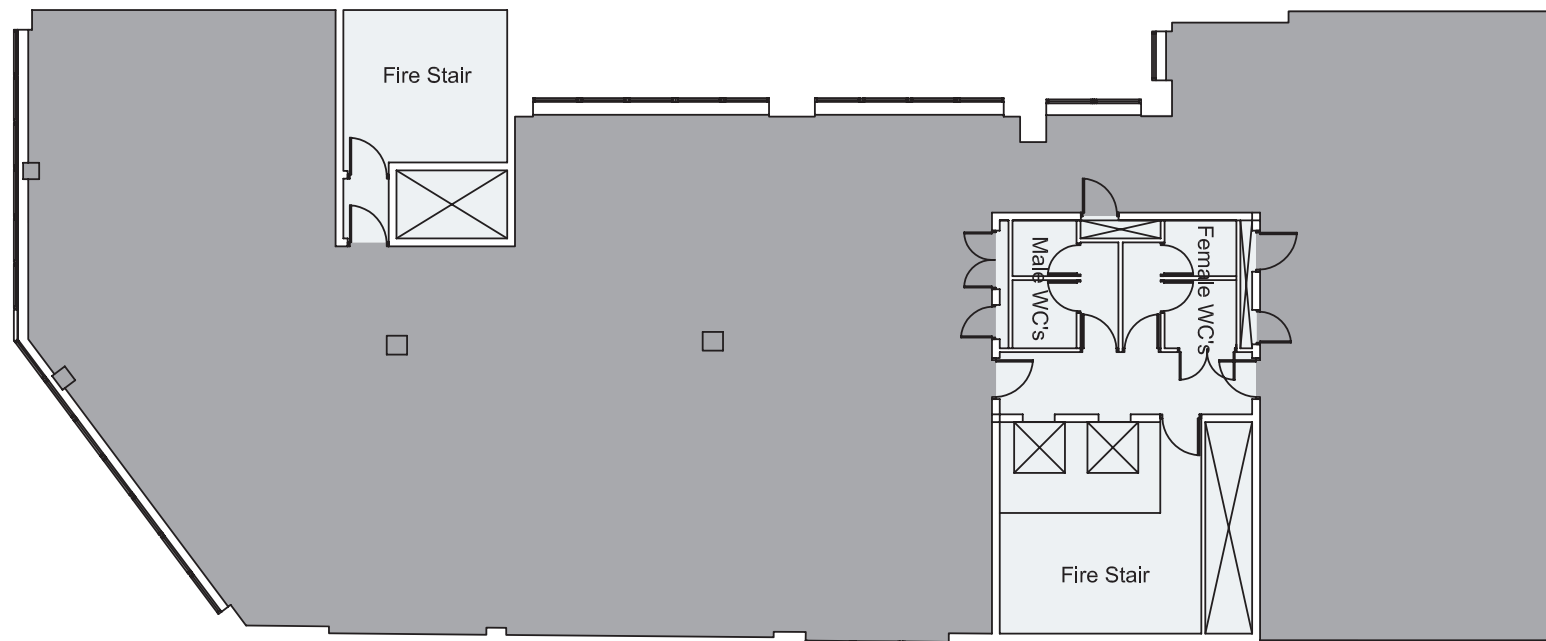


NEW LIVERPOOL HOUSE

15-17 ELDON STREET, LONDON EC2

TYPICAL UPPER FLOOR PLAN



ELDON STREET

For indicative purposes only (not to scale)

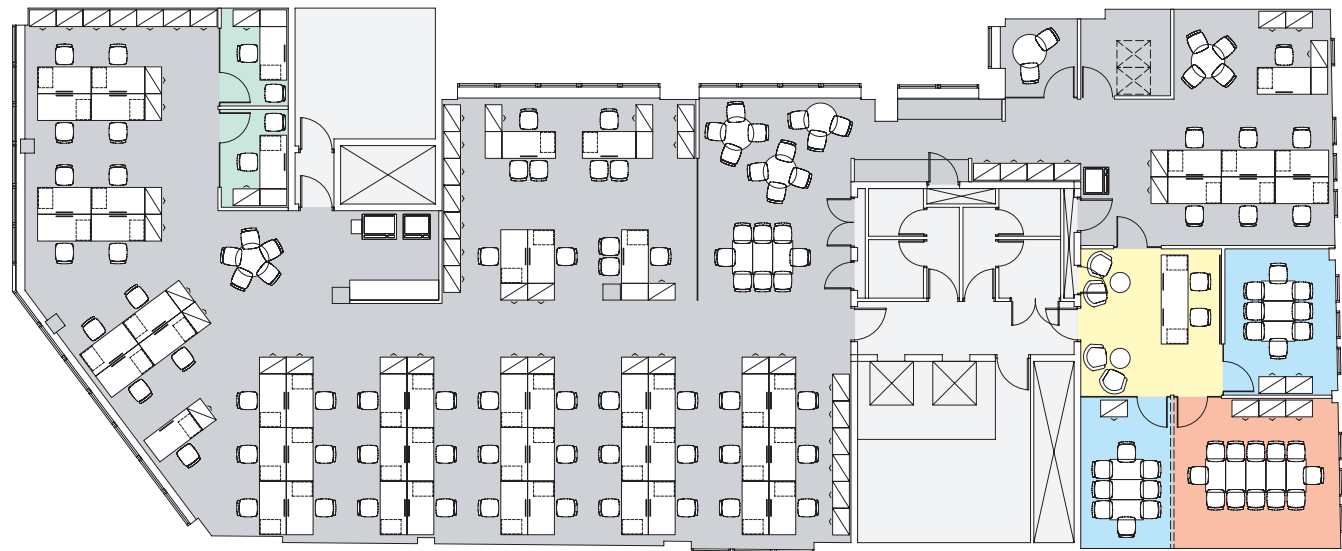
NEW LIVERPOOL HOUSE

15-17 ELDON STREET, LONDON EC2

OPEN PLAN LAYOUT

- 2 x 1 Person Offices
- 2 x 8 Person Meeting Rooms
- 1 x 12 Person Meeting Room
- 55 x Open Plan Desks
- 2 x Receptionists

Total Seats: 57



ELDON STREET

For indicative purposes only (not to scale)

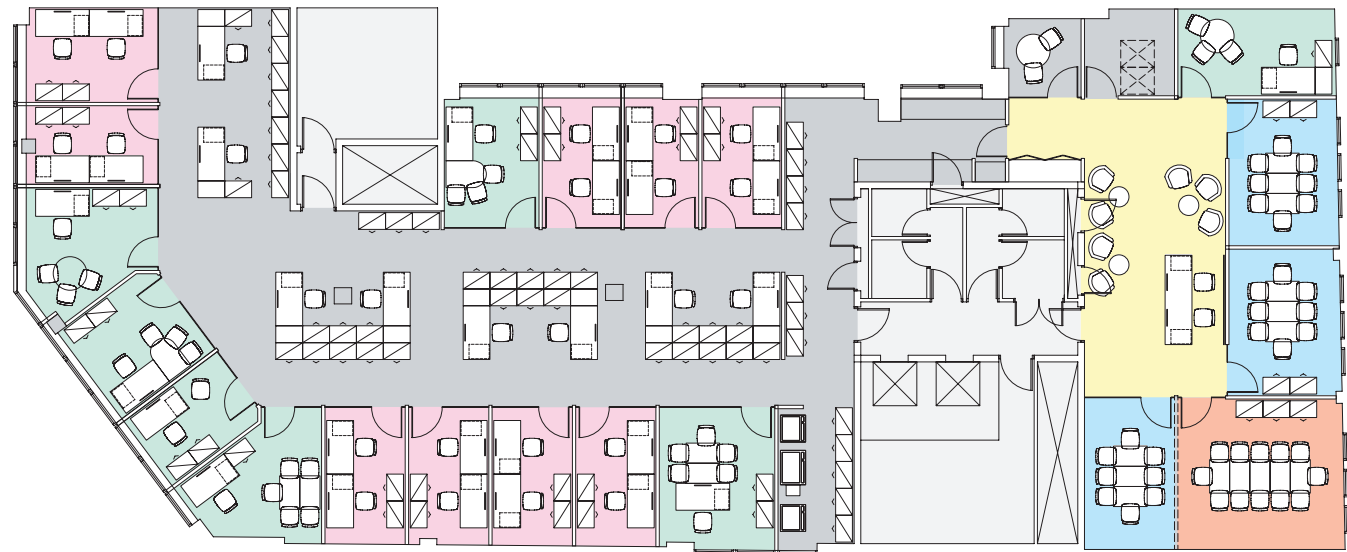
NEW LIVERPOOL HOUSE

15-17 ELDON STREET, LONDON EC2

LEGAL LAYOUT

- 7 x 1 Person Offices
- 9 x 2 Person Offices
- 3 x 8 Person Meeting Rooms
- 1 x 12 Person Meeting Room
- 8 x Open Plan Desks
- 2 x Receptionists

Total Seats: 35



ELDON STREET

For indicative purposes only (not to scale)