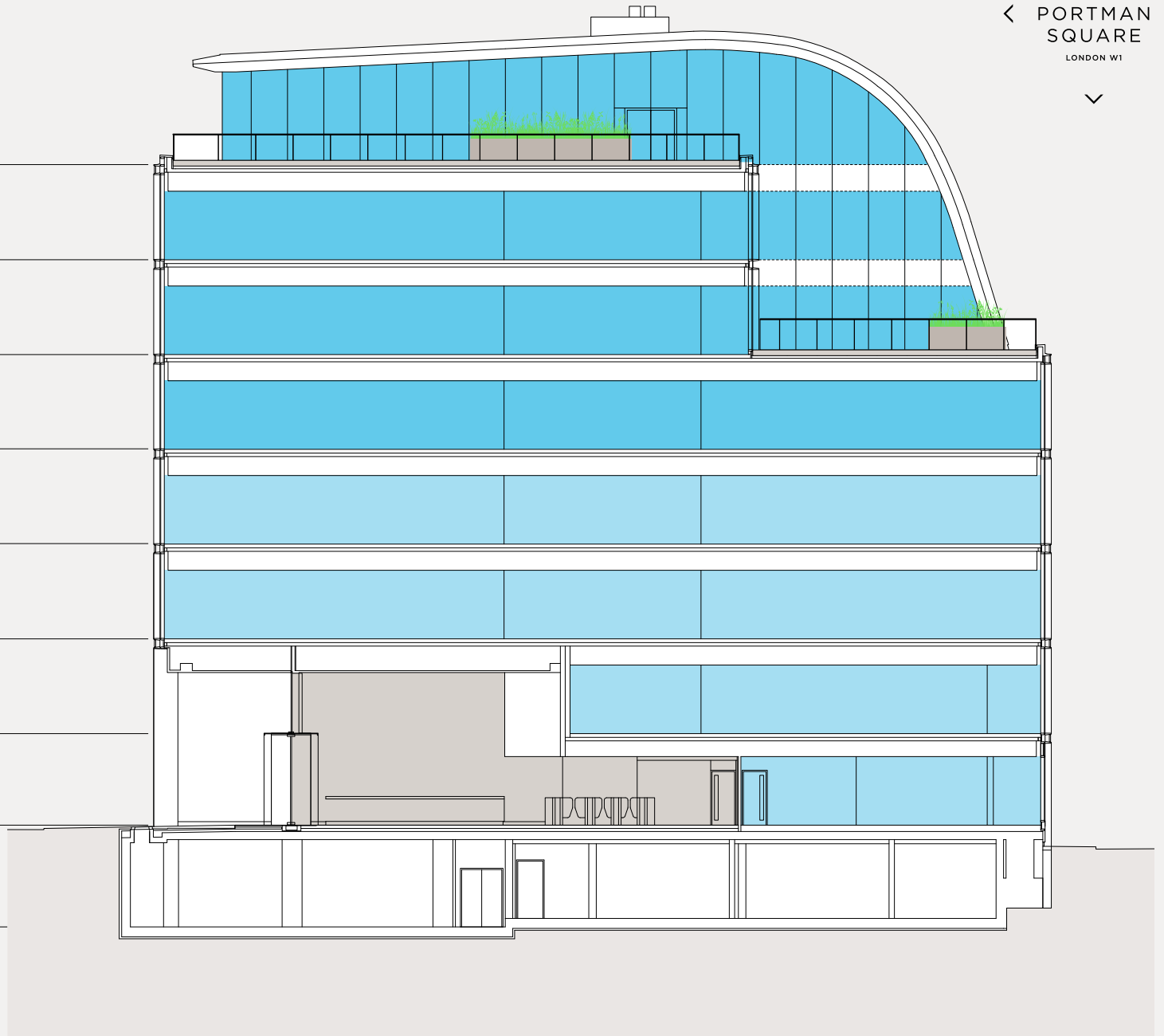


SCHEDULE OF AREAS

^
 10
 < PORTMAN >
 SQUARE
 LONDON W1
 v

FLOOR	SQ FT	SQ M
7th Floor	Let to Aspect Capital	
6th Floor	Let to Aspect Capital	
5th Floor	Let to Aramco	
4th Floor	Let to Aramco	
3rd Floor	18,534	1,722
2nd Floor	18,535	1,722
1st Floor	16,787	1,560
Ground Floor	1,548	144
TOTAL	55,404	5,148



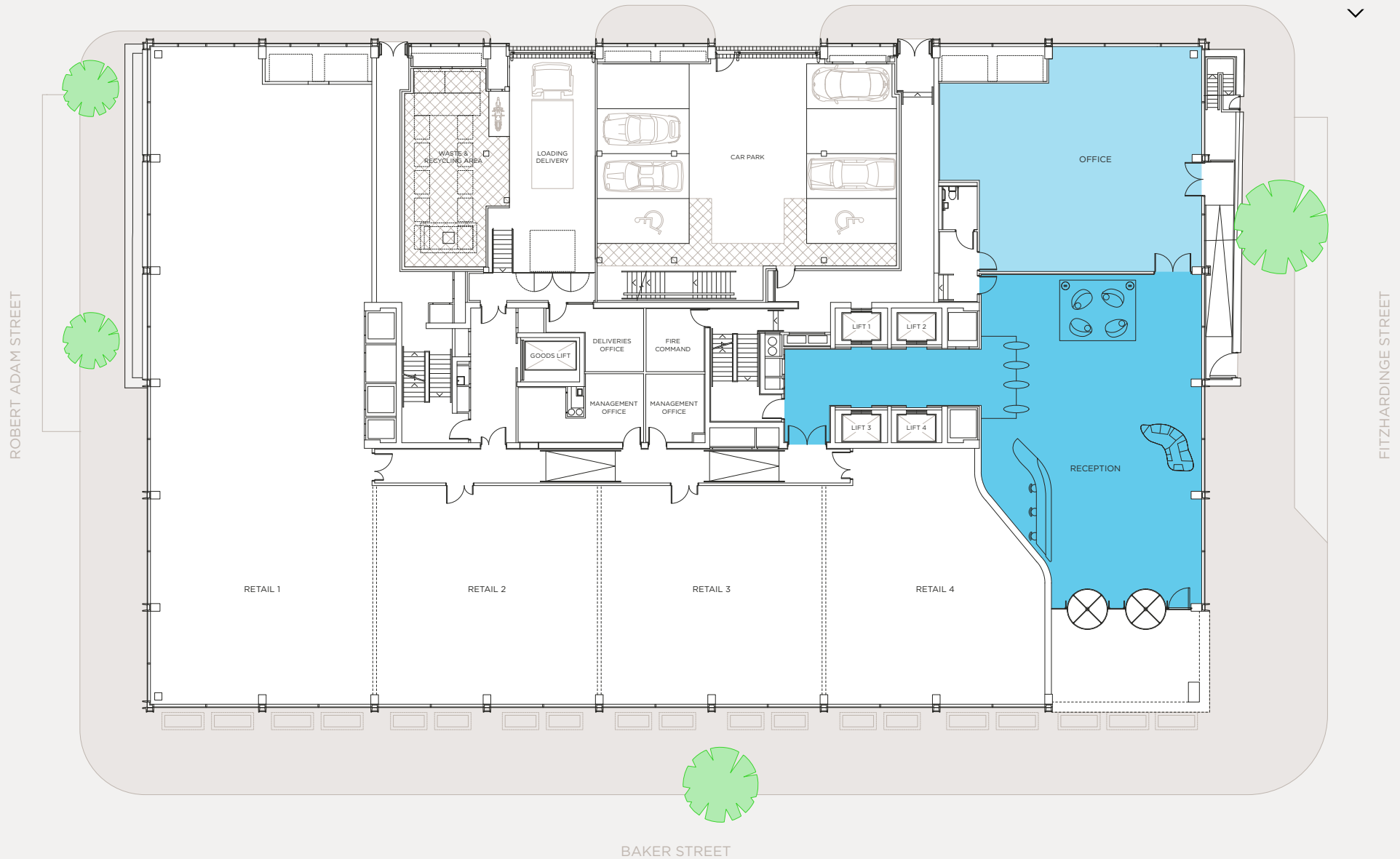
All floor areas are net internal

Plans are indicative and not to scale

GROUND FLOOR

Reception 2,032 sq ft 189 sq m
Office 1,548 sq ft 144 sq m

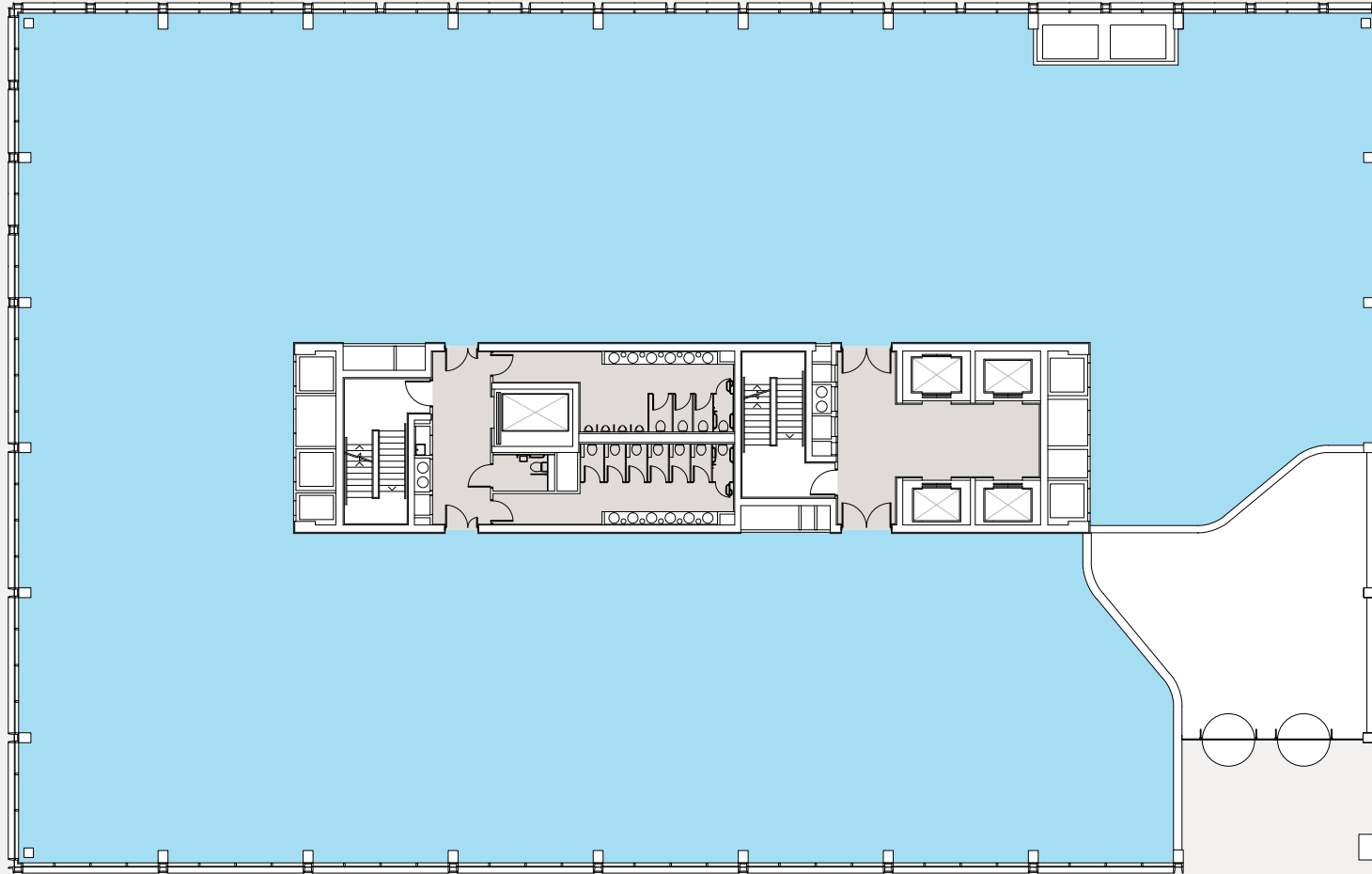
10
PORTMAN SQUARE
LONDON W1



1ST FLOOR

16,787 sq ft 1,560 sq m

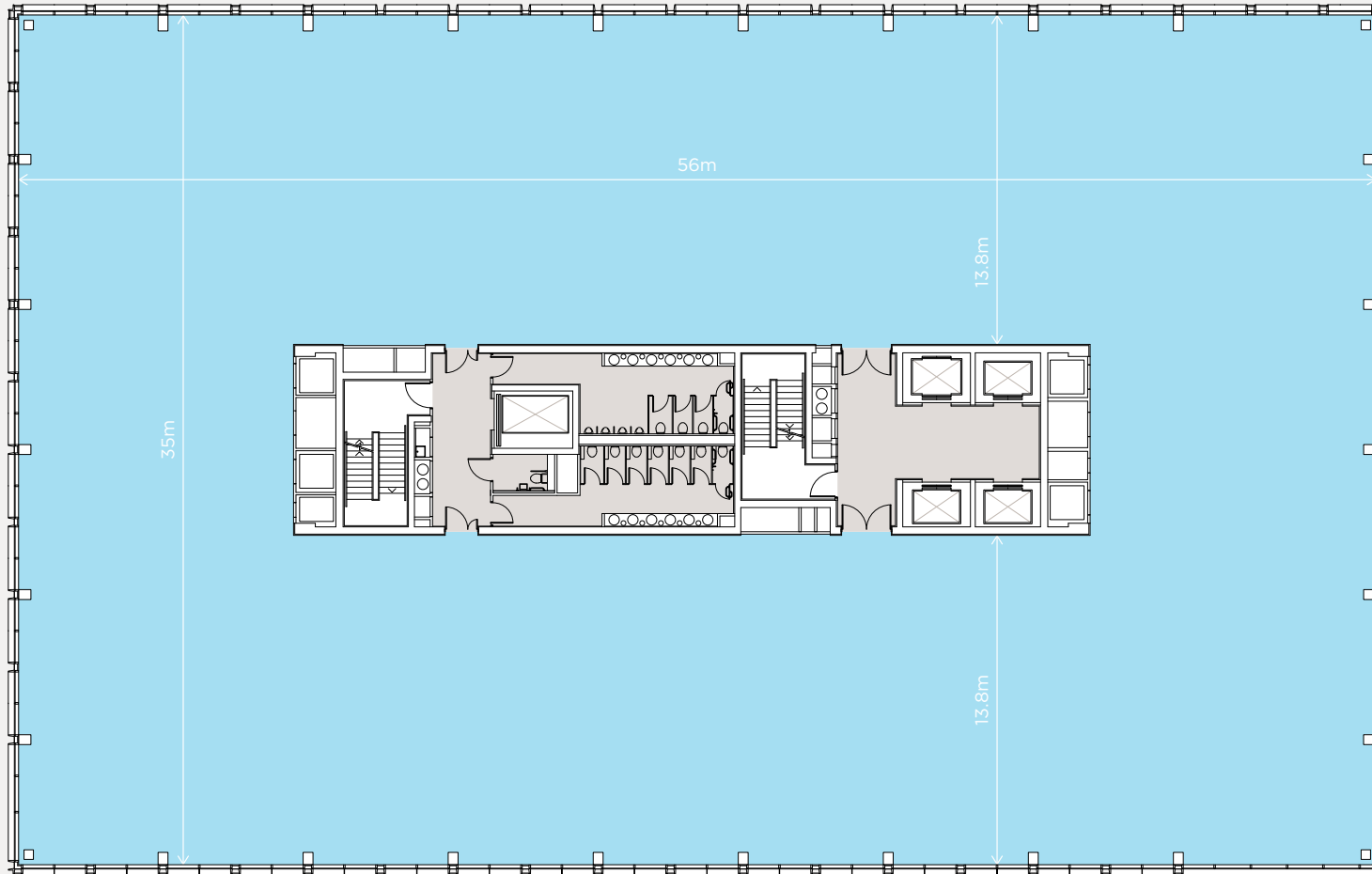
^
10
< PORTMAN SQUARE >
LONDON W1
v



2ND FLOOR

18,535 sq ft 1,722 sq m

10
PORTMAN
SQUARE
LONDON W1



3RD FLOOR

18,534 sq ft 1,722 sq m

10
PORTMAN
SQUARE
LONDON W1

